

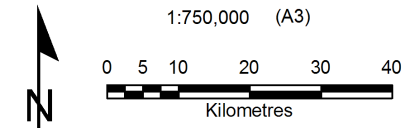
# Public Information Map Geraldton Fire 'Mooka'

Fire Area at 05:00 21/01/2012  
Map Produced at 15:45 21/01/2012

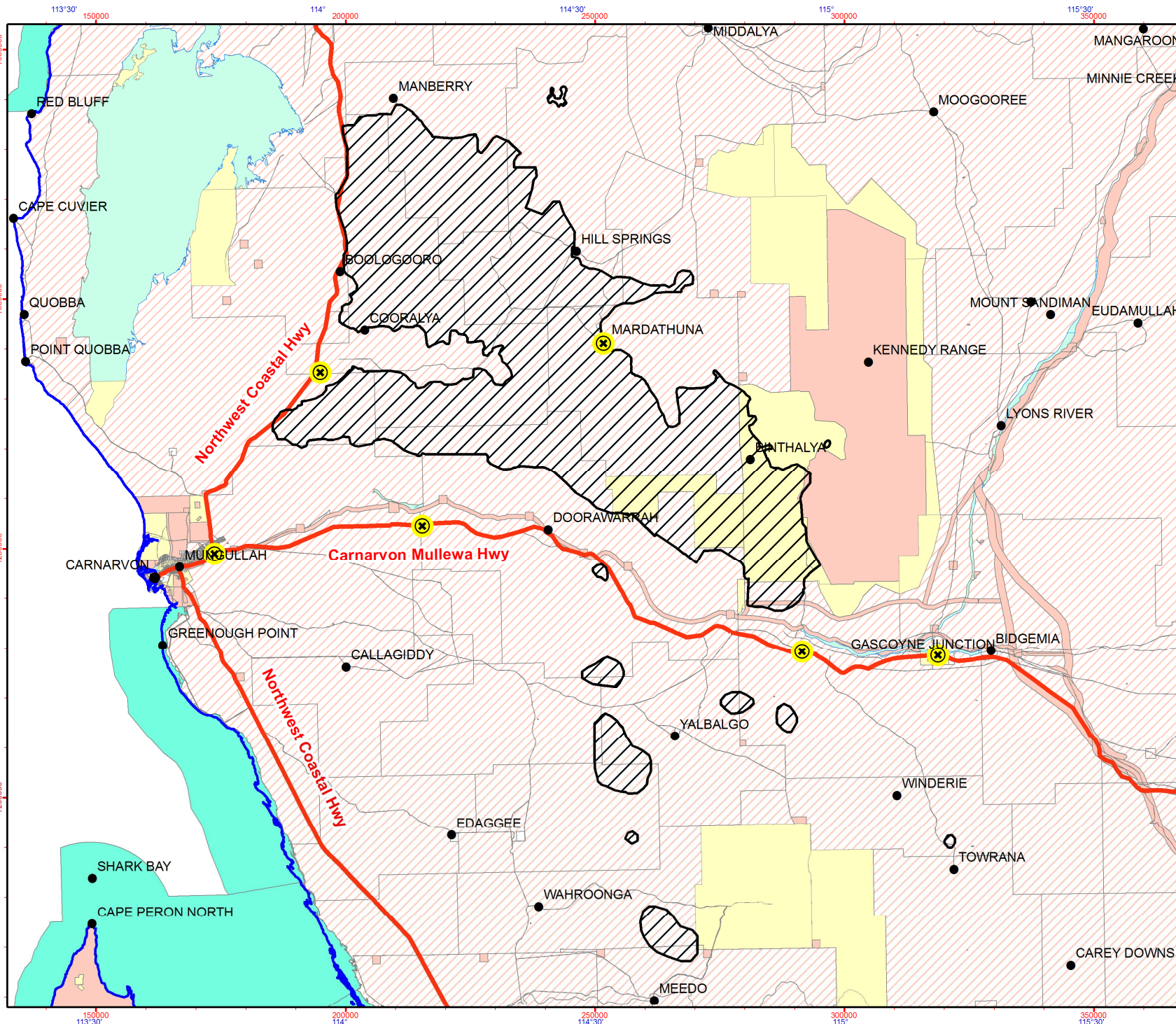
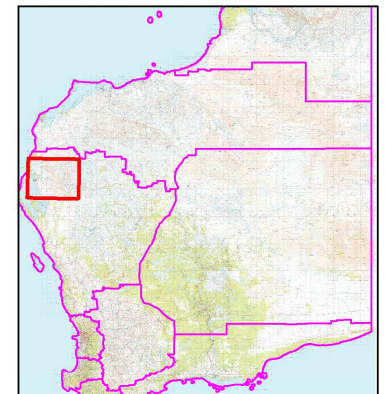
## Legend

- Localities
- ⊗ Road Closure active
- WA Coast
- Roads
- ▨ Fire Boundary
- MIDWEST Cadastre (Land Parcels)
  - ▨ Crown Lease
  - ▨ Crown Reserve
  - ▨ Freehold
  - ▨ Lease / Reserve
  - ▨ Marine Park
  - ▨ Public Roads
  - ▨ Unallocated Crown Land
  - ▨ Water

**Fire Perimetre: 724 km**  
**Fire Area: 462,421 ha**



Projection: Universal Transverse Mercator  
MGA Zone 50. Datum: GDA94



Graticule shown at 30 minutes intervals  
Grid shown at 50000 metre intervals

Roads and tracks on land managed by DEC may contain unmarked hazards and their surface condition is variable.  
Exercise caution and drive to conditions on all roads.  
The Dept. of Environment and Conservation does not guarantee that this map is without flaw of any kind and disclaims all liability for any errors, loss or other consequence which may arise from relying on any information depicted.

Produced by FMS,  
Department of  
Environment and Conservation

Job Ref: R:\RSD\_Share\Bushfire 2011\21\State Wide\  
GER\_007\Situation\_Mapping\Projects\2012\21\_Day